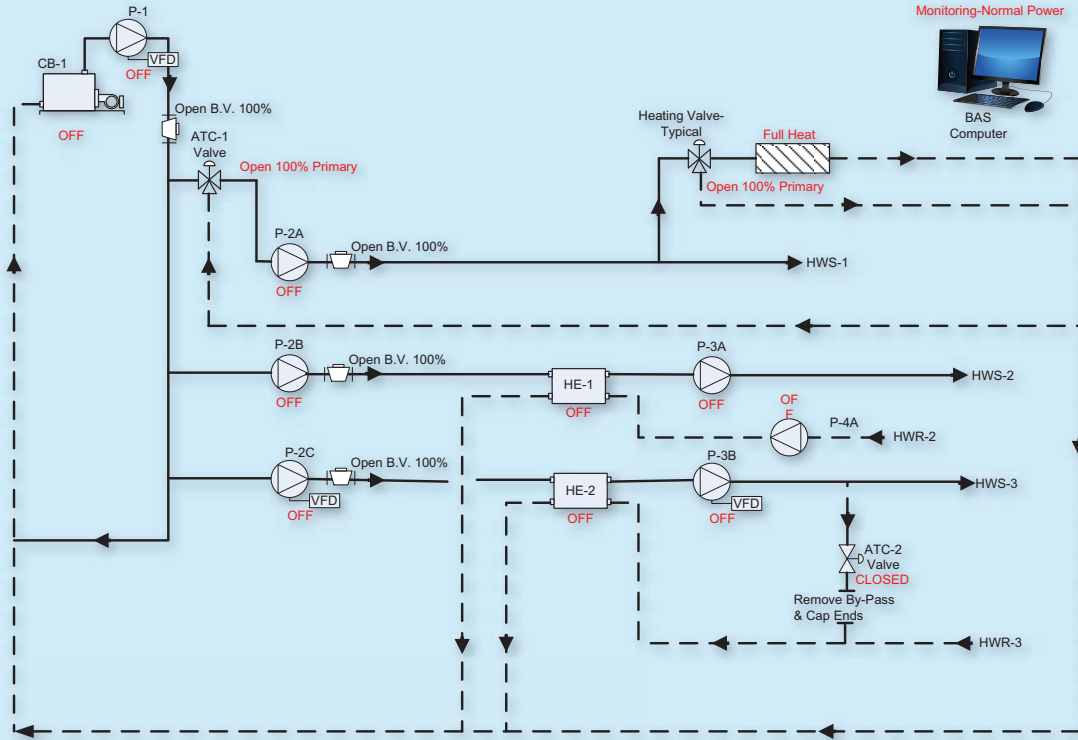


MONTH 3 - The Energy Conservation Opportunity: Process Heating for an Industrial Building Application - Solution Implementation and Monitor, Measure, and Benchmarking



Primary-Secondary Industrial Heating				1		2		3	
				Off-Fail Safe		On-Max Winter Heating		On-Max Summer Heating	
Device	Tag	Description	Reaction	Status	Result	Status	Result	Status	Result
	ATC-1 Valve	Outdoor Air Compensated ATC Valve	Open 100% Primary Open 100% Secondary Modulating Between Primary and Bypass	X X X X	Pass Pass Pass Pass	X X X X	Pass Pass Pass Pass	X X X X	Pass Pass Pass Pass
	Heating Valve-Typical	Typical Building Heat ATC Valve	Open 100% Primary Open 100% By-Pass Modulating Between Primary and By-Pass	X X	Pass Pass	X X	Pass Pass	X X	Pass Pass
	BAS Computer	Building Automation System Interface	No Signal-No Power Monitoring-Normal Power Monitoring-Emergency Power ALARM	X X X X	Pass Pass Pass Pass	X X X X	Pass Pass Pass Pass	X X X X	Pass Pass Pass Pass
	CB-1	Condensing Boiler	ON OFF MODULATING	X X X	Pass Pass Pass	X X X	Pass Pass Pass	X X X	Pass Pass Pass
	Baseboard Heat-Typical	Building Heat Perimeter Radiation	Full Heat Partial Heat No Heat	X X X	Pass Pass Pass	X X X	Pass Pass Pass	X X X	Pass Pass Pass
	HE-1	Heat Exchanger-Domestic Hot Water/Heat Pump	ON OFF	X X	Pass Pass	X X	Pass Pass	X X	Pass Pass
	HE-2	Heat Exchanger-Process Heat	ON OFF	X X	Pass Pass	X X	Pass Pass	X X	Pass Pass
	P-1	Primary Pump VFD	ON OFF MODULATING	X X X	Pass Pass Pass	X X X	Pass Pass Pass	X X X	Pass Pass Pass
	P-2C	Secondary Pump with VFD-Process Heat	ON OFF MODULATING	X X X	Pass Pass Pass	X X X	Pass Pass Pass	X X X	Pass Pass Pass
	P-3B	Process Hot Water Pump with VFD	ON OFF MODULATING	X X X	Pass Pass Pass	X X X	Pass Pass Pass	X X X	Pass Pass Pass

ANSWERS: To view and download this month's answers, visit www.esmagazine.com.